

PHC8200

SMART



4.0



SACMI



SACMI PHC8200





PHC8200

SMART



PHC Smart是新一代集成自动化PHC型压机，如今拥有更强大的数字设置和监测系统，具有即时控制和提高生产产能的优势。

PHC Smart is a new generation of integrated-automation PHC presses, now with an even more powerful digital set-up and monitoring system, providing immediate control and further productivity advantages.

PHC SMART压机拥有一套先进的综合诊断系统，可为用户提供更加详细、准确的总体概况和实时显示电能能耗。

PHC SMART presses feature an advanced integrated diagnostics system that provides users with a more detailed, accurate general overview and real-time electricity consumption monitoring.

PHC SMART可从设备接收更多信息，具体就是可监测到每一个需要注意的点。这意味着可在重点区域快速采取行动并更有效地规划维修维护。

PHC SMART makes it possible to receive much more information from devices and identify, in detail, any points requiring attention. This means action can be taken swiftly in highlighted areas and intervention planned more effectively.

得益于软件的全面更新，这种最新一代的萨克米压机不仅更快而且更精确，首先可将工业4.0的理念付诸于实践 - 例如“预测性维修维护”。

Thanks to a complete overhaul of the software, this latest generation of Sacmi presses is not only faster and more precise but also, above all, ready to put Industry 4.0 principles – such as “predictive maintenance” – into practice.

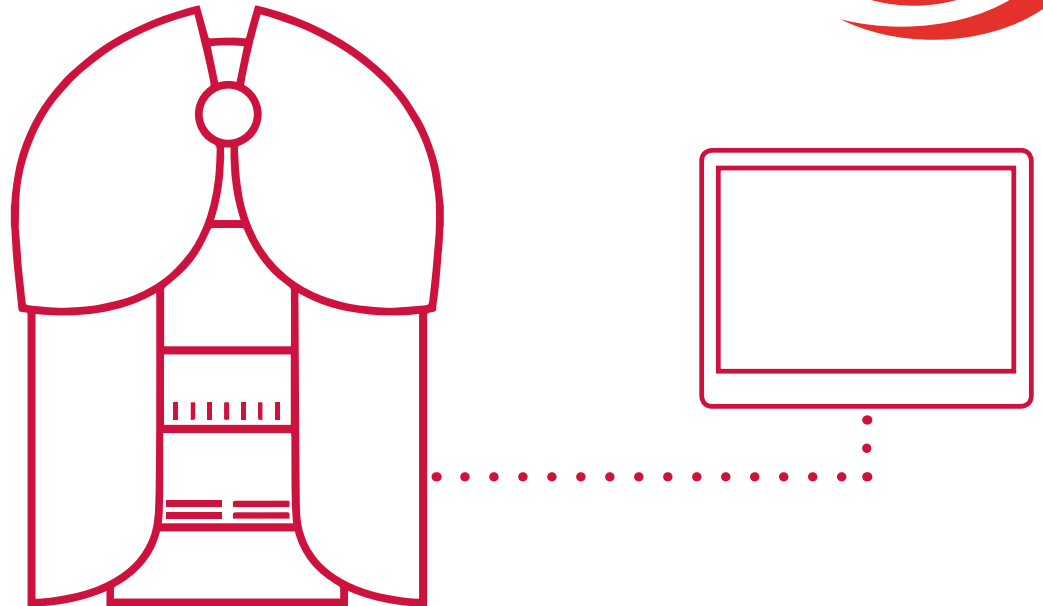
得益于先进的传感器系统，网络综合诊断系统以及电能耗的实时监测，可以对所有的工作区域进行快速管理，同时可以提前规划必要的工作。

Advanced sensor systems, integrated web-based diagnostics and real-time consumption monitoring allow all machine areas to be managed rapidly and any required work to be planned in advance.



PHC8200

SMART



新型易操作界面

自动控制及操作界面通过一个功能强大的工控电脑实现。

NEW EASIER-TO-USE INTERFACE

The automation and interface functions are managed by a single, suitably powerful PC.

带循环结构的以太网总线

在单个总线出现错误（瞬间收缩）的情况下也可以确保动作及生产的连续性，从而提高公司的生产力。

ETHERNET BUS WITH LOOP ARCHITECTURE

Ensures continuity of operation and production also in the event of a single bus error (with instantaneous retraction of the latter), thus boosting corporate productivity.

安全程序与自动化程序整合在一起

用程序起到安全作用，简化了安全配线连接。

SAFETY PROGRAMME INTEGRATED WITH AUTOMATION PROGRAMME

Simplifies the way safety wiring is managed.

19" 触摸屏显示

允许用户快速和直观地访问所有数据

- 提供更多的数据存放空间，从而减少页面的页数

19" TOUCHSCREEN DISPLAY

Allows users to access all data quickly and intuitively

- Offers more data reallocation space and so reduces the number of pages
- Allows for more immediate management of manual commands

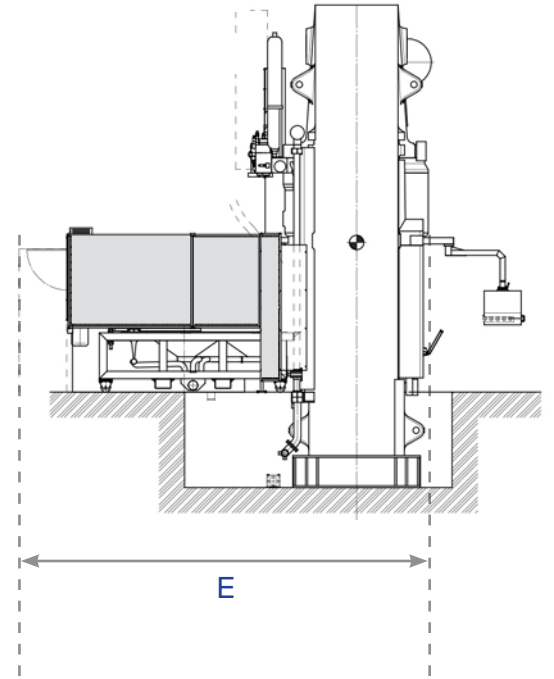
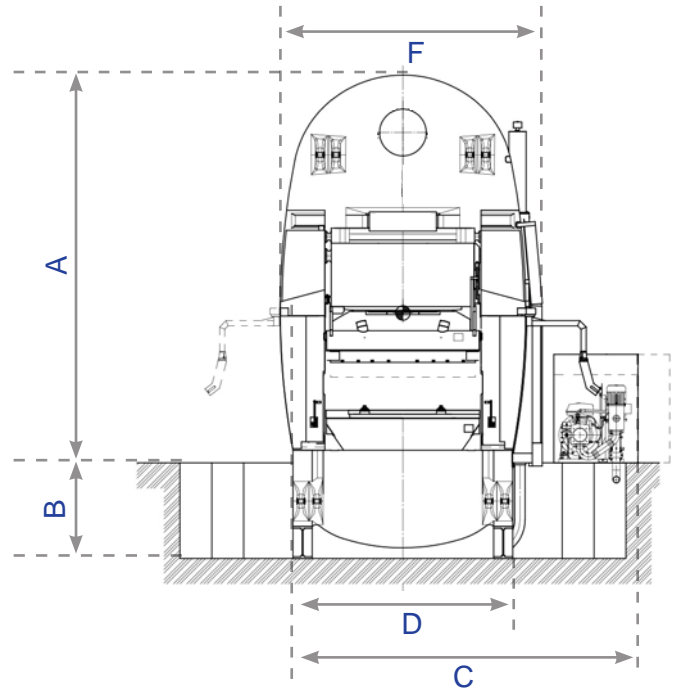
- 允许更直接地管理手动指令



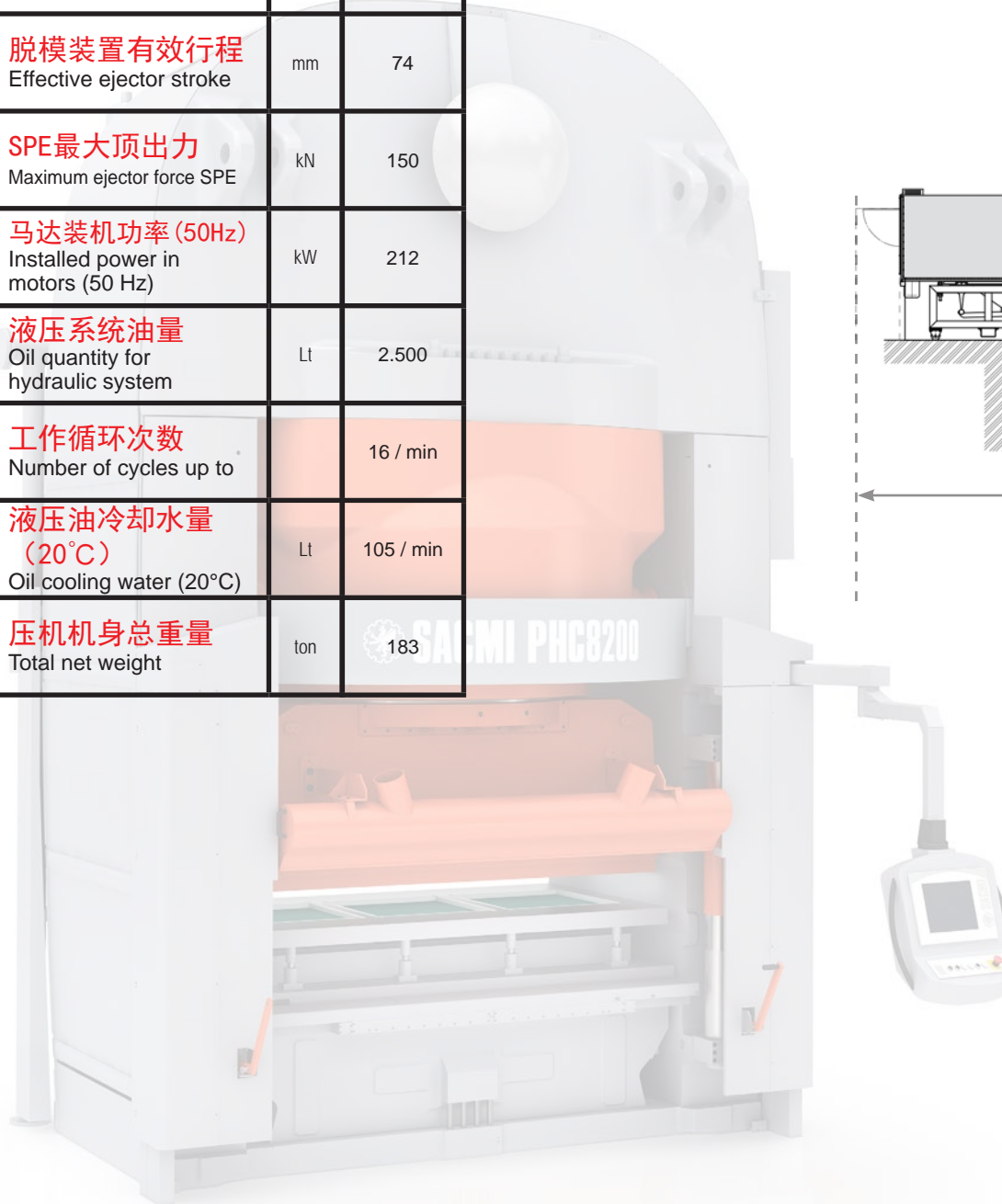
主要技术特性

Key technical specifications

PHC8200		
最大压制力 Max pressing power	kN	82.000
立柱间距 Clearance between columns	mm	2.450
冲头最大行程 Max plunger stroke	mm	230
脱模装置有效行程 Effective ejector stroke	mm	74
SPE最大顶出力 Maximum ejector force SPE	kN	150
马达装机功率 (50Hz) Installed power in motors (50 Hz)	kW	212
液压系统油量 Oil quantity for hydraulic system	Lt	2.500
工作循环次数 Number of cycles up to		16 / min
液压油冷却水量 (20°C) Oil cooling water (20°C)	Lt	105 / min
压机机身总重量 Total net weight	ton	183



尺寸 Dimensions		PHC8200
A	mm	5.792
B	mm	1.475
C	mm	5.570
D	mm	3.759
E	mm	6.566
F	mm	4.700



遍及30个国家80家子公司的全球网络
A worldwide network of 80 companies in 30 countries



萨克米机械（佛山南海）有限公司
中国广东省佛山市南海区狮山镇南海经济开发区北园兴业北路
邮政编码：528225
电话：+86-757-81206111 / 81206100
传真：+86-757-81206195
邮箱：info@sacmi.cn
网址：www.sacminanhai.com

SACMI MACHINERY (FOSHAN NANHAI) CO., LTD.
Xingye North Road, North Park of Nanhai Economic Development Zone, Shishan Town
Nanhai District, Foshan City, Guangdong Province, Postal Code 528225, P.R. China
Tel: +86-757-81206111 / 81206100 - Fax: +86-757-81206195
E-mail: info@sacmi.cn - Url: www.sacminanhai.com

SACMI RESERVES THE RIGHT TO MAKE CHANGES WITHOUT NOTICE

萨克米有权进行修改，恕不预先通知